

Timber Ridge 91400 Ryan Gulch 404A

1 bedroom 1 full bath, 419 square feet per county records.
Property tax \$687 (2007)
Utilities: Electric average approximately \$15.

Association Dues: \$339.00 which include heat, water, sewer, building insurance, snow removal, trash pickup, cable TV, and the clubhouse with pool, hot tub, racquetball and outdoor tennis.

Ground floor access
Pets OK for owners

Charming condo with a complete kitchen remodel with granite tile, new cabinets and appliances. Step right out the door to enjoy all of the winter and summer activities Wildernest has to offer. Hiking, cross country skiing, snowshoeing, mountain biking - or grab the free bus just out on Ryan Gulch Road. This is a great "starter" condo for the person that is tired of sitting on I 70, instead sit in your own living room watching a crackling fire. Make an early start Monday morning and spend the ski season stress free. Fully furnished except for the TV. Just bring your suitcase and move right in. Give Keats a call to see this great condo.



View from the deck at 404A Timber Ridge



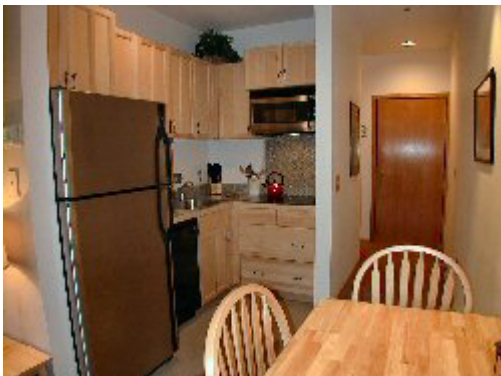
Not a big space, but super efficient.



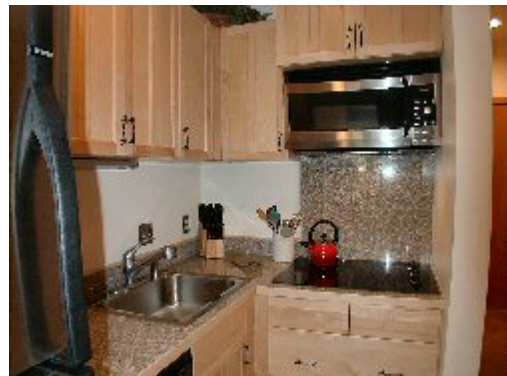
Wood burning fireplace in the living area.
The fireplace is stubbed for gas if you wanted to convert.



Sold furnished with the exception of the TV



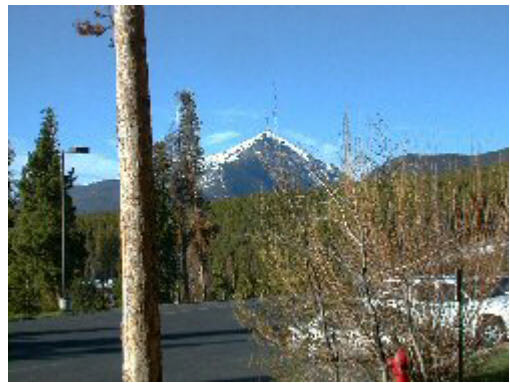
Kitchen has been completely remodeled



Oven is combo microwave-convection.



The deck is off the bedroom.



View of Peak One from the front door.

**Colorado Dreams Broker
PO Box 2808
491 Blue River Parkway
Silverthorne CO 80498
800-571-1091 970-485-0793**